

CERTIFICATE OF LOCATION OF GOVERNMENT CORNER

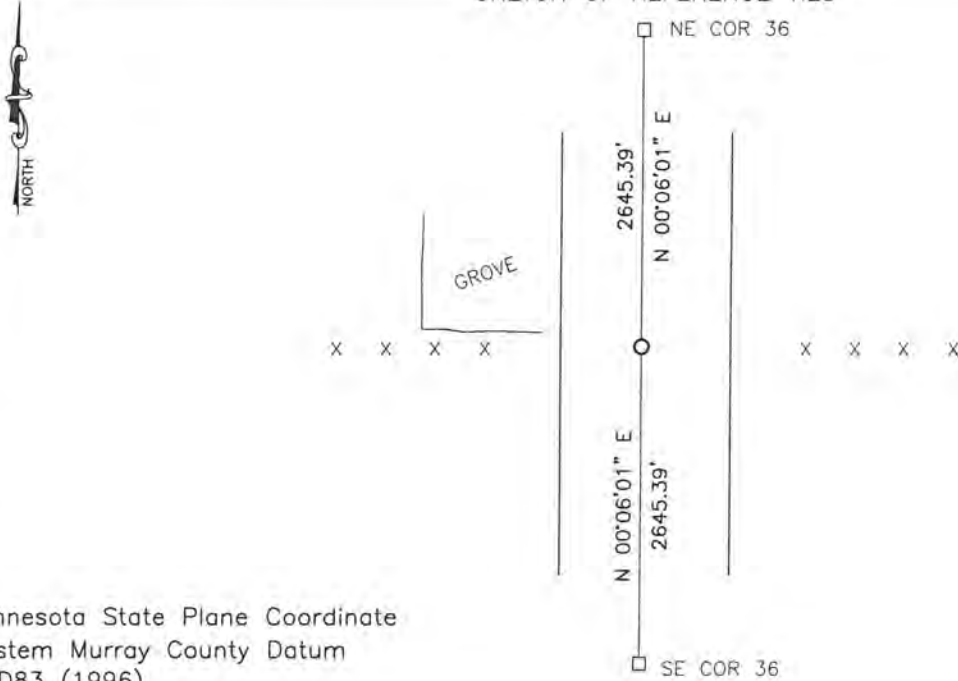
EAST QUARTER Corner of Section 36, Township 108, Range 42, 5TH P.M.

STATE OF MINNESOTA, County of MURRAY

At the corner location shown on the sketch:

- On _____ found a _____
DATE
- left monument as found, lowered monument, removed monument (explain)
- On 4/25/16 placed a 5/8" iron with seal #50343
DATE

SKETCH OF REFERENCE TIES



Minnesota State Plane Coordinate
 System Murray County Datum
 NAD83 (1996)
 N: 197897.729
 E: 485100.084

Statement of evidence relative to this corner location is on back of page.

I hereby certify that this document and the data contained herein was prepared by me or under my direct supervision.

[Signature]
 SIGNATURE
1/24/17
 DATE

Registration No. 50343
 Land Surveyor, Professional Engineer
 County Surveyor, County Engineer

OFFICE OF THE COUNTY RECORDER
County of MURRAY

I hereby certify that this document was filed in the Co. Recorders office at 9:00 A.M. on the 17TH day of FEBRUARY A.D. 20 17

County Recorder [Signature]
 By _____, Deputy

DOCUMENT NO. _____

Statement of Evidence

In 1861, J.W. Myers did the original survey of the east line of the township.

On April 25, 2016, Bueltel-Moseng Land Surveying set a 5/8" iron with seal #50343 midway and on line between section corners. It is in the center line of the road and in line with the fences to the east and west.